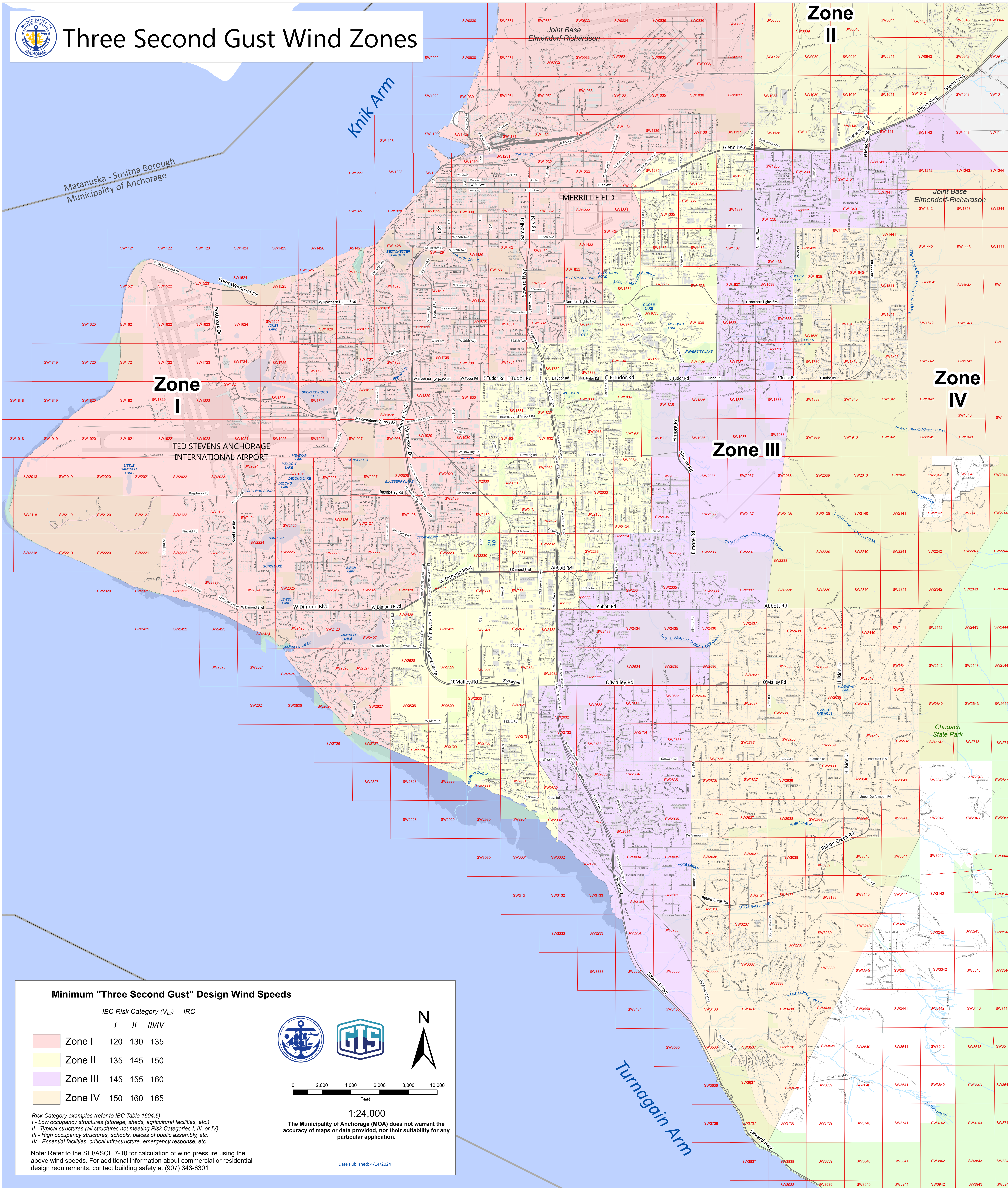




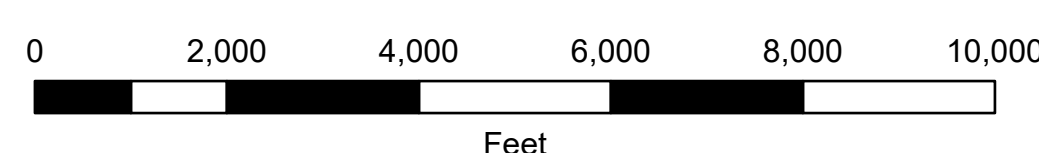
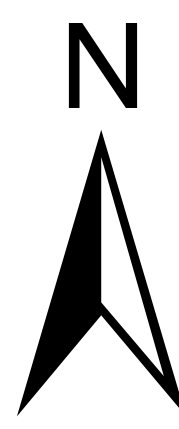
Three Second Gust Wind Zones



Minimum "Three Second Gust" Design Wind Speeds

IBC Risk Category (V_{w}) IRC

	I	II	III/IV
Zone I	120	130	135
Zone II	135	145	150
Zone III	145	155	160
Zone IV	150	160	165



1:24,000

The Municipality of Anchorage (MOA) does not warrant the accuracy of maps or data provided, nor their suitability for any particular application.

Risk Category examples (refer to IBC Table 1604.5)
I - Low occupancy structures (storage, sheds, agricultural facilities, etc.)
II - Typical structures (all structures not meeting Risk Categories I, III, or IV)
III - High occupancy structures, schools, places of public assembly, etc.
IV - Essential facilities, critical infrastructure, emergency response, etc.

Note: Refer to the SEI/ASCE 7-10 for calculation of wind pressure using the above wind speeds. For additional information about commercial or residential design requirements, contact building safety at (907) 343-8301

Date Published: 4/14/2024